

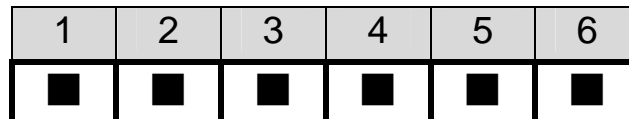
# IP-3S-RS-R40

## 3-Slot Backplane with 2 PCI Bus User Manual Ver. 4.0

### 1. P8, P9: AT Power Connector

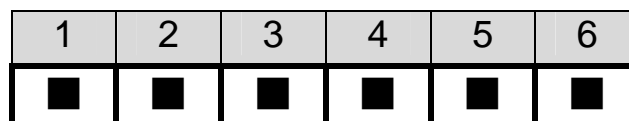
P8:

Pin	Description
1	PWRGD
2	+5V
3	+12V
4	-12V
5	GND
6	GND



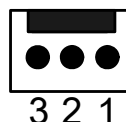
P9:

Pin	Description
1	GND
2	GND
3	-5V
4	+5V
5	+5V
6	+5V



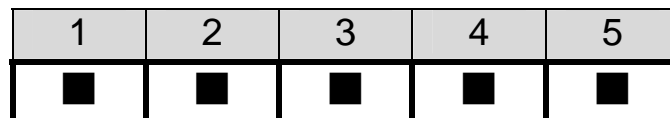
### 2. CN1, CN5: Fan Connector

Pin	Description
1	GND
2	+12V
3	NC



### 3. CN4: Voltage Connect

Pin	Description
1	+5V
2	-5V
3	-12V
4	+12V
5	GND

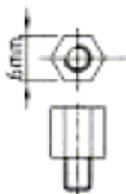


### 4. PCI routing table:

PCI ROUTING		
SIGNAL	PCI 1	PCI 2
REQ#	REQ0#	REQ1#
GNT#	GNT0#	GNT1#
CLOCK	CLK0	CLK1
IDSEL	AD19	AD20
INTA#	A	D
INTB#	B	A
INTC#	C	B
INTD#	D	C

### 5. Notice:

- a. Recommend to use 6mm width spacer to install



- b. Torsion must less than 6lb-inch

6. Dimension:

